

# SURFACE MOUNT (SMT) COIN CELL ENCLOSURE CONTACTS

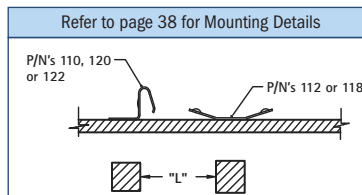
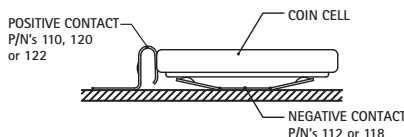
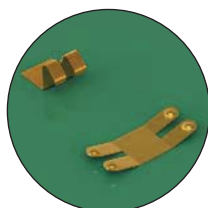
- Contacts for Enclosure cases with self contained battery compartments
- Design facilitates easy battery access, removal & installation

- Suitable for industrial and consumer product applications
- Spring contacts adjust to variations in battery diameter for a dependable connection

- Positive and Negative contacts can be used as a design pair or individually on a PCB
- Accommodates cell diameters from 12mm to 30mm

AVAILABLE ON TAPE AND REEL

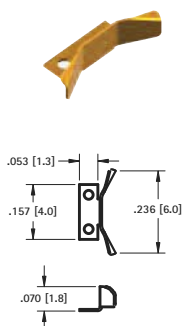
MATERIAL: .006 (.15) Stainless Steel, Gold Plate (Flash)



---CONTACT SELECTION GUIDE			
BATTERY DIAMETER	BATTERY REFERENCE	CAT. NO. REFERENCE	MOUNTING DETAIL
Accommodates 12mm to 16mm	CR1212, CR1216, CR1220, CR1612, CR1616, CR1620	120 (Pos) & 118 (Neg)	See page 38
	CR1225, CR1625, CR1632	110 (Pos) & 118 (Neg)	See page 38
Accommodates 20mm to 30mm	CR2012, CR2016, CR2020, CR2320, CR2412	120 (Pos) & 112 (Neg)	See page 38
	CR2025, CR2032, CR2325, CR2330, CR2430, CR3032	110 (Pos) & 112 (Neg)	See page 38
	CR2050, CR2335, CR2354, CR2440, CR2450, CR2477, CR3048	122 (Pos) & 112 (Neg)	See page 38

## POSITIVE

### LOW BATTERY HEIGHT 1.2mm to 2.0mm

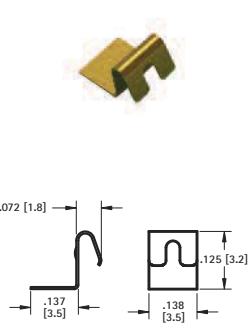


CAT. NO. 120 Bulk

CAT. NO. 120TR Tape & Reel

Tape & Reel Spec's: 16mm wide, 8mm pitch, 13 inch reel, 3000 pieces per reel

### MEDIUM BATTERY HEIGHT 2.0mm to 3.2mm

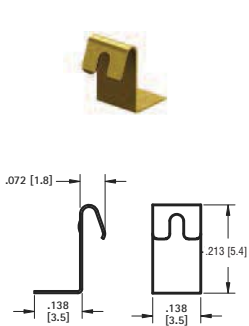


CAT. NO. 110 Bulk

CAT. NO. 110TR Tape & Reel

Tape & Reel Spec's: 16mm wide, 8mm pitch, 13 inch reel, 2000 pieces per reel

### TALL BATTERY HEIGHT 3.5mm to 7.7mm



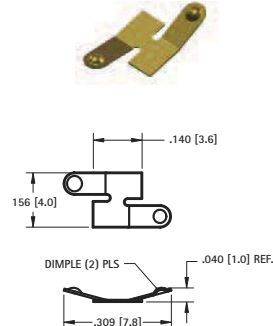
CAT. NO. 122 Bulk

CAT. NO. 122TR Tape & Reel

Tape & Reel Spec's: 16mm wide, 8mm pitch, 13 inch reel, 1000 pieces per reel

## NEGATIVE

### BATTERY DIAMETER 12mm to 16mm

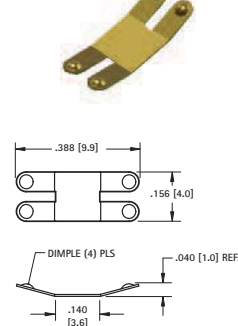


CAT. NO. 118 Bulk

CAT. NO. 118TR Tape & Reel

Tape & Reel Spec's: 24mm wide, 8mm pitch, 13 inch reel, 5000 pieces per reel

### BATTERY DIAMETER 20mm to 30mm



CAT. NO. 112 Bulk

CAT. NO. 112TR Tape & Reel

Tape & Reel Spec's: 24mm wide, 8mm pitch, 13 inch reel, 5000 pieces per reel

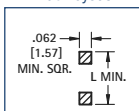
# SURFACE MOUNT (SMT) & THRU-HOLE (THM) NEGATIVE BATTERY CONTACTS

AVAILABLE ON TAPE AND REEL

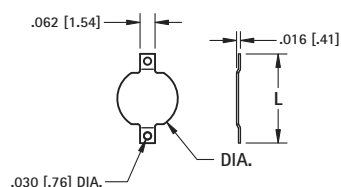


- Assures proper contact

Pad Layout



## SMT COMPACT\*



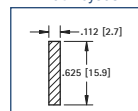
DWG. 1 MATERIAL: .008 (.20) Brass

TIN-NICKEL PLATE	MATTE TIN PLATE						
CAT. NO.	ON TAPE & REEL	CAT. NO.	ON TAPE & REEL	DWG.	L	DIA.	TAPE & REEL SPECS
2991	2991TR	2981	2981TR	1	.368 (9.4)	.250 (6.4)	16mm wide, 8mm pitch, 1500/7 reel
2992	2992TR	2982	2982TR	1	.289 (7.4)	.186 (4.7)	16mm wide, 12mm pitch, 1000/7 reel
2993	2993TR	2983	2983TR	2	.625 (15.9)	—	24mm wide, 16mm pitch, 1000/13 reel

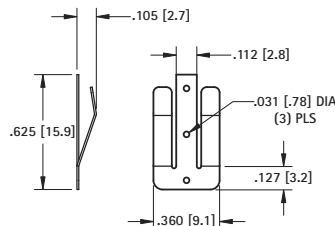


- Assures proper contact

Pad Layout



## SMT SPRING CONTACT\*

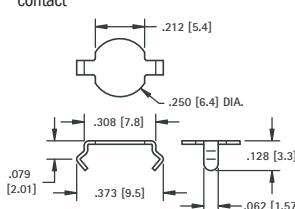


DWG. 2 MATERIAL: .010 (.25) Phosphor Bronze

## THM SNAP IN\*

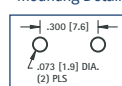


- Assures proper contact



MATERIAL: .008 (.20) Phosphor Bronze, Tin-Nickel Plate  
CAT. NO. 2990

Mounting Detail



\*Note: Cannot be used with Cat. No. 3028, 3029, 3032, 3038, 3042, 3026, 3078.

Tel (516) 328-7500 • Fax (516) 328-1080  
(800) 221-5510 • kec@keyelco.com

**KEYSTONE**  
RoHS COMPLIANT ~ ISO 9001 CERTIFIED

www.keyelco.com  
55 S. Denton Avenue, New Hyde Park, NY 11040